

# **Agilent Enhancer Cell**

## **Operator's Manual**



**Agilent Technologies**

# Notices

© Agilent Technologies, Inc. 2013

No part of this manual may be reproduced in any form or by any means (including electronic storage and retrieval or translation into a foreign language) without prior agreement and written consent from Agilent Technologies, Inc. as governed by United States and international copyright laws.

## Manual Part Number

70-9072

## Edition

Rev A, May 2013

Agilent Technologies, Inc.  
3501 Stevens Creek Blvd.  
Santa Clara, CA 95052 USA

## Warranty

**The material contained in this document is provided “as is,” and is subject to being changed, without notice, in future editions. Further, to the maximum extent permitted by applicable law, Agilent disclaims all warranties, either express or implied, with regard to this manual and any information contained herein, including but not limited to the implied warranties of merchantability and fitness for a particular purpose. Agilent shall not be liable for errors or for incidental or consequential damages in connection with the furnishing, use, or performance of this document or of any information contained herein. Should Agilent and the user have a separate written agreement with warranty terms covering the material in this document that conflict with these terms, the warranty terms in the separate agreement shall control.**

## Technology Licenses

The hardware and/or software described in this document are furnished under a license and may be used or copied only in accordance with the terms of such license.

## Restricted Rights Legend

U.S. Government Restricted Rights. Software and technical data rights granted to the federal government include only those rights customarily provided to end user customers. Agilent provides this customary commercial license in Software and technical data pursuant to FAR 12.211 (Technical Data) and 12.212 (Computer Software) and, for the Department of Defense, DFARS 252.227-7015 (Technical Data - Commercial Items) and DFARS 227.7202-3 (Rights in Commercial Com-

puter Software or Computer Software Documentation).

## Safety Notices

### CAUTION

A CAUTION notice denotes a hazard. It calls attention to an operating procedure, practice, or the like that, if not correctly performed or adhered to, could result in damage to the product or loss of important data. Do not proceed beyond a CAUTION notice until the indicated conditions are fully understood and met.

### WARNING

A WARNING notice denotes a hazard. It calls attention to an operating procedure, practice, or the like that, if not correctly performed or adhered to, could result in personal injury or death. Do not proceed beyond a WARNING notice until the indicated conditions are fully understood and met.

# Contents

<b>1</b>	<b>Introduction</b>	<b>5</b>
	Assembly Components	8
	Unpacking Your Enhancer Cell Assembly	9
<b>2</b>	<b>Operation</b>	<b>11</b>
	Membrane Selection Information for the Enhancer Cell	14
	Ideal Characteristics for a Membrane	14
	Examples of Membranes Used for In Vitro Release Tests	14
	<b>Index</b>	<b>15</b>

## Contents

This page was intentionally left blank, except for this message.



# 1 Introduction

Assembly Components 8

Unpacking Your Enhancer Cell Assembly 9



## 1 Introduction

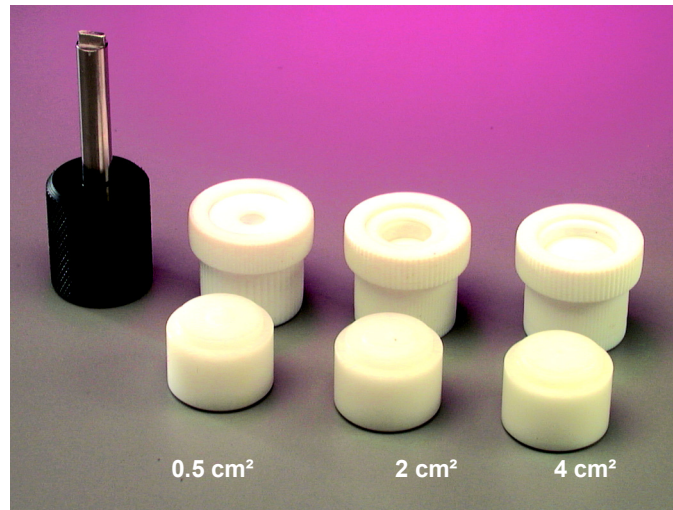
The Enhancer Cell Assembly, designed for research, quality control, and product development laboratories, is a PTFE cell with adjustable volume and a screw cap to retain the skin or artificial membrane. The assembly can be used with any dissolution tester and is available with 4.0, 2.0, or 0.5 cm<sup>2</sup> surface area. Using the Paddle-over-Enhancer-Cell method (see [Figure 3](#), “Paddle over Enhancer Cell,” on page 7) provides release rates comparable to Franz Cell technology. It provides release rate data for quality control of topicals using readily available dissolution apparatus, including 200 mL or standard 900 mL dissolution vessels.

The alignment tool (see [Figure 1](#), “Enhancer Cell Assembly,” on page 6) is used to hold the membrane in place and ensure the washer is centered properly while using the adjustment tool to set the volume with the adjustment plate. When purchasing more than one Enhancer Cell Assembly, one alignment tool is required per size. The adjustment tool is universal and fits all sizes. Both the alignment tool and the adjustment tool are required and must be ordered separately. The Enhancer Cell Assembly does not include the vessel, paddle, or membrane / skin.

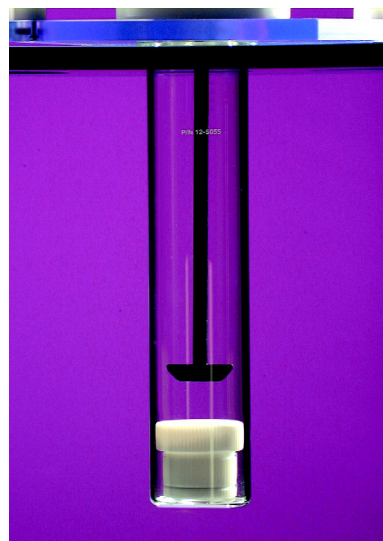


**Figure 1** Enhancer Cell Assembly

\*not provided—for illustrative purposes only.



**Figure 2** Enhancer Cell Assembly Surface Areas



**Figure 3** Paddle over Enhancer Cell

## Assembly Components

The Enhancer Cell Assembly consists of the following components (see [Figure 1](#), “Enhancer Cell Assembly,” on page 6):

- Retaining ring – secures the membrane or skin sample to the cell body and ensures full contact with the sample.
- Washer – provides a leak-proof seal between the membrane, retaining ring, and cell body.
- Membrane (not provided) – retains the sample in the sample compartment. Usually an artificial membrane although some tests use skin samples.
- Adjustment plate – allows control of the volume of the reservoir within the cell body. This threaded part can be placed at the appropriate height for each test and can be completely removed for easy cleaning. A Viton O-ring prevents leakage.
- Cell body – provides a variable depth reservoir for the sample (semisolid, solution, suspension, or emulsion) being tested.

Two additional tools are required to properly use the Enhancer Cell Assembly and must be ordered separately:

- Adjustment tool – to move the adjustment plate.
- Alignment tool – to ensure the membrane is in proper contact with the sample and the washer is properly centered.

This product is warranted to be free from manufacturing defects at the time of delivery. Please report any problems upon receipt of merchandise to an Agilent Customer Care Center. Contact information can be found [www.agilent.com](http://www.agilent.com) under your country using the Contact Us link.



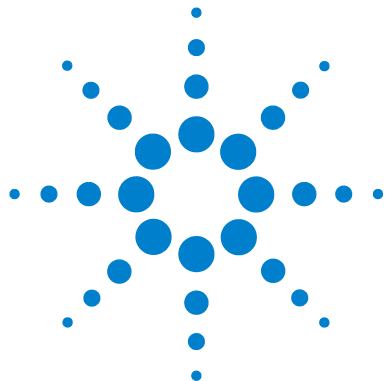
## Unpacking Your Enhancer Cell Assembly

- 1 Carefully remove the Enhancer Cell Assembly.
- 2 Ensure all of the following items were shipped with your Enhancer Cell:
  - Enhancer Cell Assembly Operator's Manual
  - Retaining ring
  - Washer
  - Adjustment plate with O-ring
  - Cell body
  - Included if purchased separately:
    - Adjustment tool
    - Alignment tool

If any item is damaged or missing, contact the Dissolution Systems Service Department or your local Agilent representative for replacements.

## **1 Introduction**

This page was intentionally left blank, except for this message.



## 2 Operation

Membrane Selection Information for the Enhancer Cell 14



To use the Enhancer Cell Assembly, follow these steps:

### NOTE

Always use care when disassembling, assembling or tightening any part of the Enhancer Cell Assembly. The PTFE parts are delicate and could be damaged by extreme force.

---

- 1 Using empty dissolution vessels and empty Enhancer Cell Assemblies, set the appropriate paddle height. The recommended distance from the top of the cell to the bottom of the paddle is 25 mm.
- 2 Ensure the Viton O-ring is in place on the adjustment plate.
- 3 Insert the adjustment plate into the cell body. Ensure the slot on the bottom of the adjustment plate is oriented toward the bottom of the cell body.
- 4 Using the adjustment tool, carefully screw the adjustment plate into the cell body until the reservoir formed at the top is the approximate volume necessary for the test.

### NOTE

Use only the special adjustment tool designed for use with the adjustment plate. Using another type of tool or screwdriver may damage the adjustment plate.

---

- 5 Fill the reservoir with the sample to be tested. Ensure the reservoir is filled to the top in order to minimize the possibility of an air bubble forming between the sample surface and the underside of the membrane. For semisolids, a uniform surface can be obtained with the aid of a laboratory spatula.
- 6 Place the membrane over the top of the sample compartment. It should be large enough that the edges overlap the top of the cell body (between 2.5 and 2.8 cm). Ensure the membrane is free of wrinkles (which can occur if the membrane is too large).
- 7 Place the washer on top of the membrane, positioning it over the top edge of the cell body. Place the retaining ring onto the cell body and *carefully* screw it on the body until it just touches the washer. *Do not fully tighten at this point.*
- 8 Carefully insert the end of the alignment tool with the indented edges into the retaining ring until it is level and evenly seated. This process

ensures the washer is properly centered and presses the membrane tight against the sample in the reservoir to prevent bubbles.

- 9** With the alignment tool still in place, insert the adjustment tool in the adjustment plate. Tighten the retaining ring until it is hand tight while giving a slight clockwise turn with the adjustment tool. Remove the alignment and adjustment tools.
- 10** Carefully place the completed assembly into the bottom of the dissolution vessel, with the membrane facing up. Add the appropriate preheated medium and begin the test.

## Membrane Selection Information for the Enhancer Cell

### Ideal Characteristics for a Membrane

Minimize resistance to drug transport

- High porosity
- Minimal thickness
- No drug binding

### Examples of Membranes Used for In Vitro Release Tests

- Regenerated cellulose (Dialysis membrane)
- Silastic membrane - polydimethyl siloxane
- Fluoropore FHLP hydrophobic membrane
- Ethylene vinyl acetate (Cotrans 9702)
- Skin (human, rat, rabbit, porcine, mouse)
- Cuprophane
- Carbosil
- Polysulfone

# Index

## C

Components, 8

## E

Enhancer Cell Assembly photo, 6

## I

In Vitro Release Tests, membranes  
for, 14

## M

Membrane characteristics, 14

## P

paragraph tags, 6  
photo, enhancer Cell Assembly, 6

## S

Sources for membranes, 14

## T

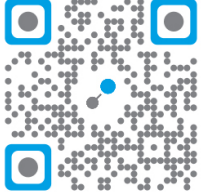
tags  
paragraphs, 6


## U

Unpacking Your enhancer cell  
assembly, 9

This page was intentionally left blank, except for this message.

KAMPILAB  
Agilent Technologies  
Authorized Distributor



  
<http://campilab.by>

ООО "КАМПИЛАБ"

A decorative horizontal line of blue and grey circles is located at the bottom of the graphic.